



**HyCeram**<sup>®</sup>  
Finest Color Components ■■

**LuxArt**<sup>®</sup>  
Unique Color Accents ■■

**Luxon**<sup>®</sup>  
Easy Color Shaping ■■

---

*Colour Catalogue*

**invicon**  
chemical solutions

**MC.**  
METAL CONCENTRATORS

## basics

organic white  
\*P7541C



deep white  
\*P7541C



deep black  
\*P426C



onyx black  
\*P419C



lakota pink  
\*P214C



indian yellow  
\*P109C



columbia blue  
\*P7451C



inca turquoise  
\*P3125C



persian violet  
\*P7651C



oriental orange  
\*P152C



coral blue  
\*P2174C



lotus green  
\*RAL 6032



veneto brown  
\*P4625C



granada red  
\*P199C



vitrol blue  
\*P2728C



platin grey  
\*P4625C



zircon red  
\*P187C



arizona blue  
\*P287C





pearl

pearl anthracite



pearl white



pearl silver



pearl rose



pearl gold



pearl red



pearl bronze



sparkling black



sparkling brown



neon

yellow



orange



pink



green



luminex

white



yellow



turquoise



green





**HyCeram**<sup>®</sup> VITA  
Finest Color Components

Good vibes of happiness



yellow



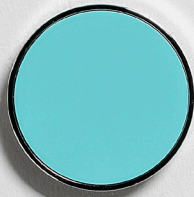
orange



pink



lavender



cyan



kiwi



**HyCeram**<sup>®</sup> SILK  
Finest Color Components

Delicate elegance



light yellow



rose



light blue



beige



light green



moss

HyCeram<sup>®</sup> LUXE  
Finest Color Components

The magic of real values



ruby



burgundy



aubergine



coral



green



forest



nordic white



P7541C / \* 2,00 mm

sonos black



P447C / \* 0,20 mm

translucent



\* 5,00 mm

cora grey



P8C / \* 0,30 mm

raspberry



P208C / \* 2,00 mm

siam red



P200C / \* 0,50 mm

silk coral



P2344C / \* 0,20 mm

lucid rose



P204C / \* 1,00 mm

tosca orange



P165C / \* 0,30 mm

sun yellow



P115C / \* 0,30 mm

sena green



P2256C / \* 0,40 mm

vintage green



P2408C / \* 0,50 mm

emerald green



P3288C / \* 1,20 mm

petrol green



P316C / \* 1,00 mm

riva blue



P305C / \* 1,00 mm

sardic turquoise



P7711C / \* 1,60 mm

metro blue



P2386C / \* 3,60 mm

muscat brown



P4625C / \* 0,30 mm

**neon**

neon yellow



P803C / \* 2,00 mm

neon orange



P804C / \* 0,60 mm

neon pink



P806C / \* 2,00 mm

neon green



P802C / \* 2,00 mm



pure clear



\* 10 mm

atlas white



\* 2,5 mm

piano black



\* 0,2 mm

oriol yellow



\* 0,2 mm

gulf orange



\* 0,4 mm

chilli red



\* 0,4 mm

expo green



\* 3 mm

victoria green



\* 1 mm

unica turquoise



\* 2,5 mm

aruba blue



\* 5 mm

rally blue



\* 2,5 mm

### Flash Colors

flash yellow



\* 1,2 mm

flash orange



\* 1,2 mm

flash cyclam



\* 1,2 mm

flash red



\* 0,3 mm

flash green



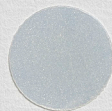
\* 1,2 mm

### Sparkling Powder

sparkling gold



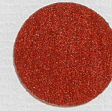
sparkling bronze



sparkling silver



sparkling red







---

Interested in creating a spectacular colour piece?  
Interested in partnership opportunities?

*Contact us*

**invicon**  
chemical solutions

**MC.**  
METAL CONCENTRATORS

SEZ: +27 12 000 4440 | CPT: +27 21 510 0770 | [info@MetCon.co.za](mailto:info@MetCon.co.za) | [MetCon.co.za](http://MetCon.co.za)